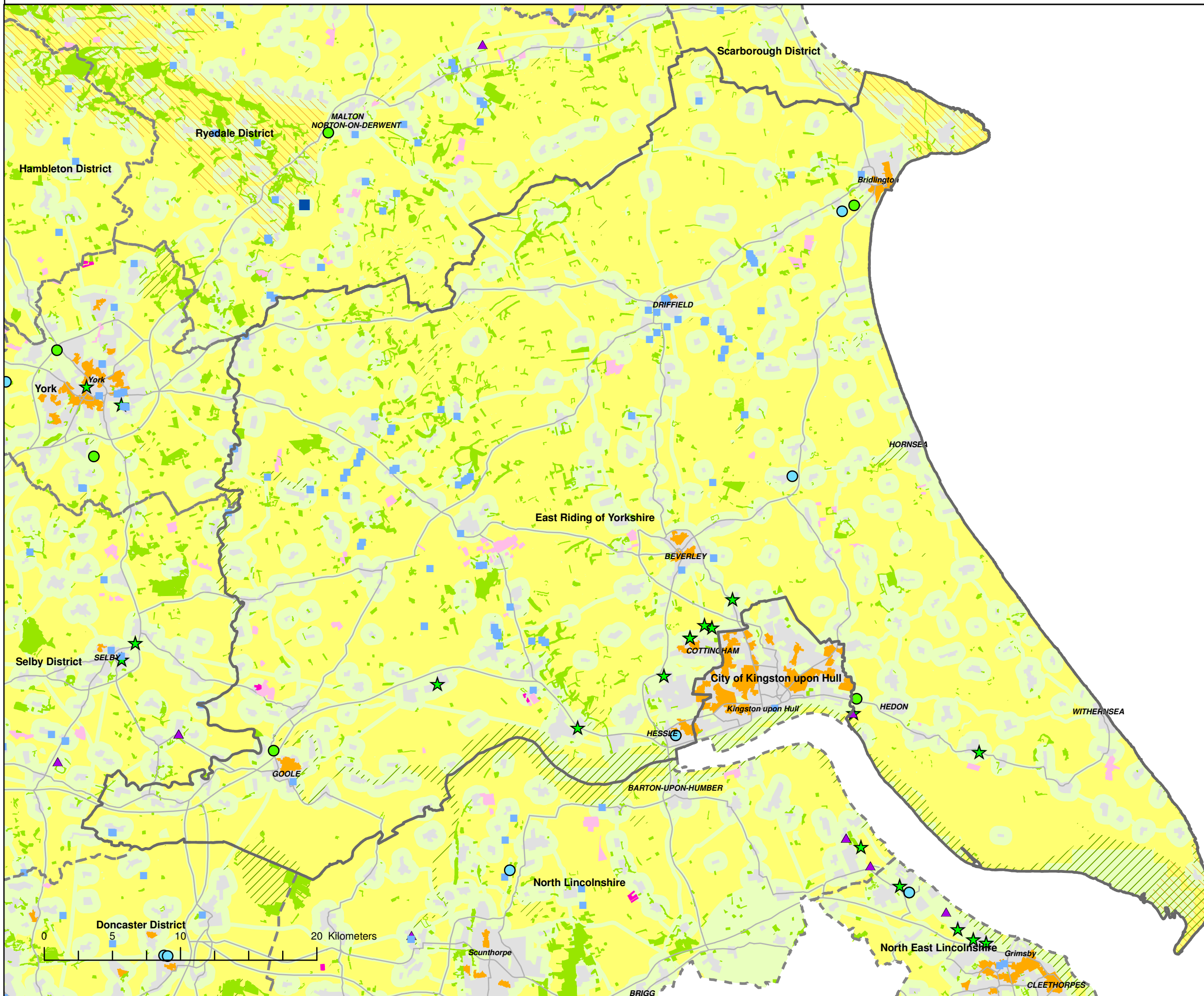


This map is reproduced from Ordnance Survey material with the permission of Ordnance Survey on behalf of the Controller of Her Majesty's Stationary Office Crown copyright. Unauthorised reproduction infringes Crown copyright and may lead to prosecution or civil proceedings. 100042586: 2010



- Legend**
- Local Authority Boundary
  - Wind Energy Site [Operational]
  - Wind Energy Site [Consented]
  - Wind Energy Site [In Planning]
  - Potential for Wind Energy
  - Existing Sewage Biogas Site
  - Existing Landfill Gas Site
  - Existing EfW Site
  - Existing Hydro Power Site
  - Potential Hydro Power Site
  - Existing CHP Site
  - Potential for CHP
  - Fossil Fuel Power Station
  - Energy Crop Scheme 1
  - Energy Crop Scheme 2
  - Nature Conservation Areas
  - Landscape Conservation Areas
  - Road Network
  - Urban Areas
  - Woodland

**East Riding of Yorkshire  
Energy Opportunity  
Plan**

**Version: 2**

**Date: 11-06-2010**

**Scale: 1:270,000 @ A3**

**GIS: Mark Morant**

**QA: Helen Pearce**

